

Awalé Commences IP Geophysics Surveys at the Sceptre and Charger Targets.

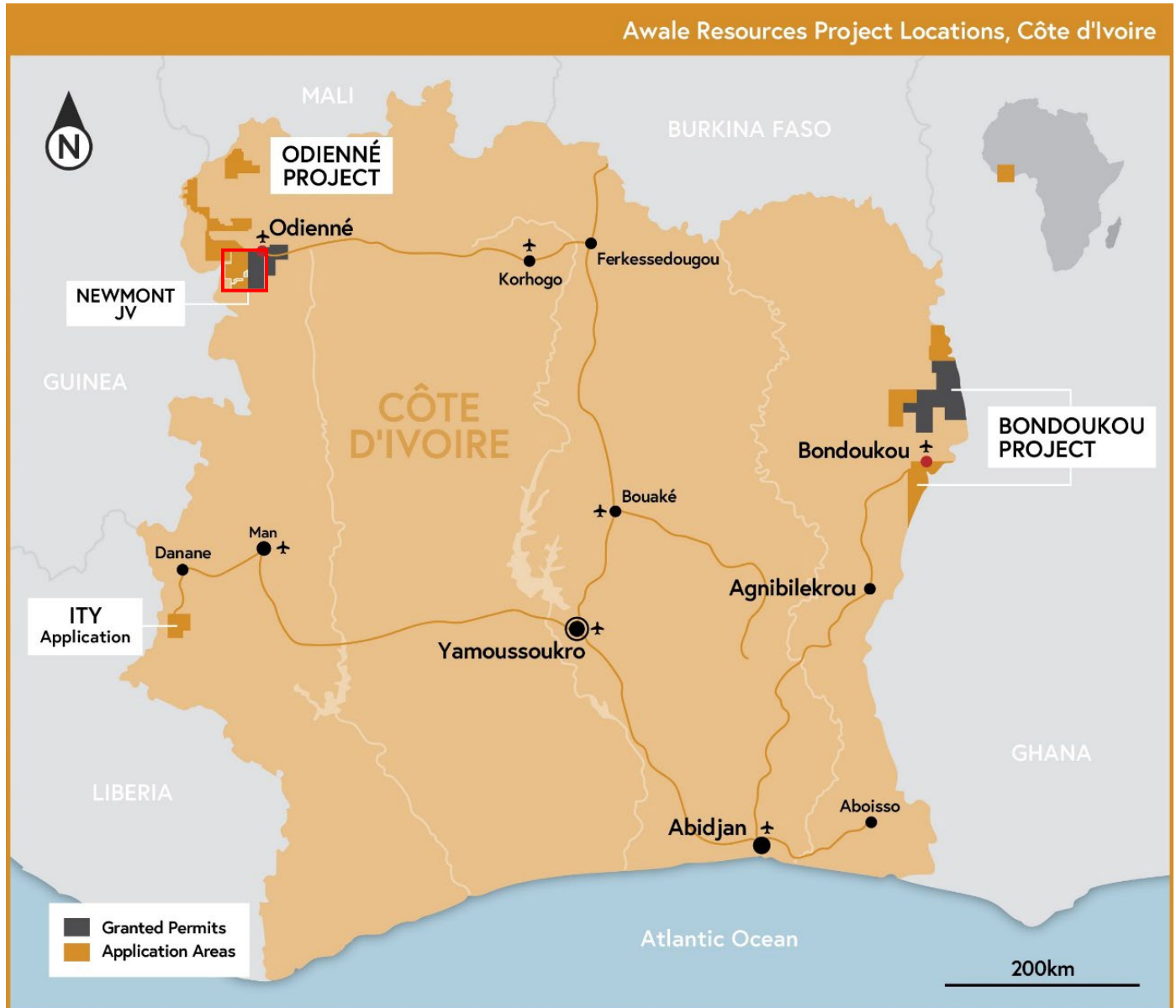


Figure 1: Location of Awalé Projects in Cote d'Ivoire – The Newmont JV Consists of 2 permits within the red box - the “Odienné Project”.

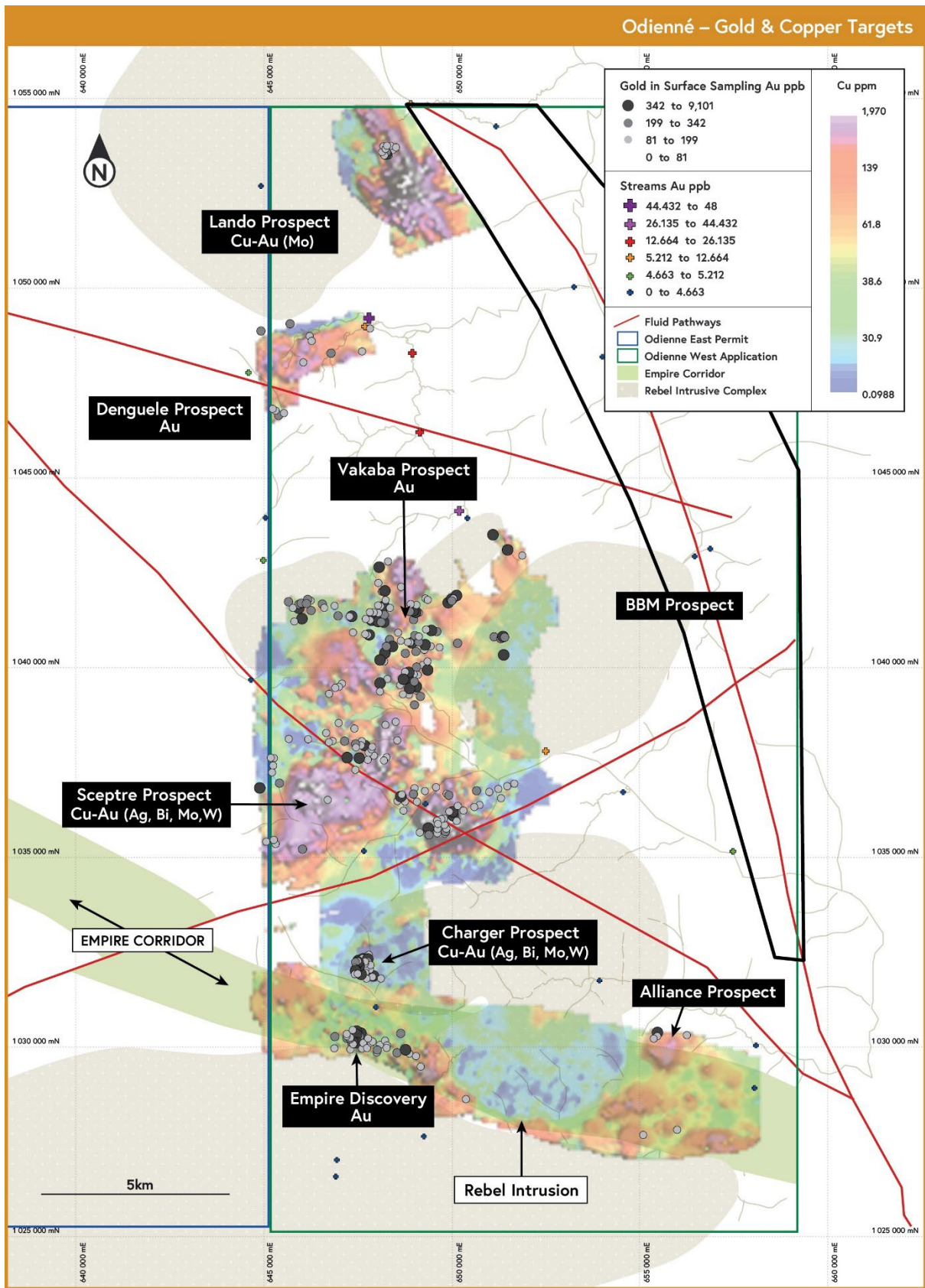


Figure 2: Odienné Project Target Locations

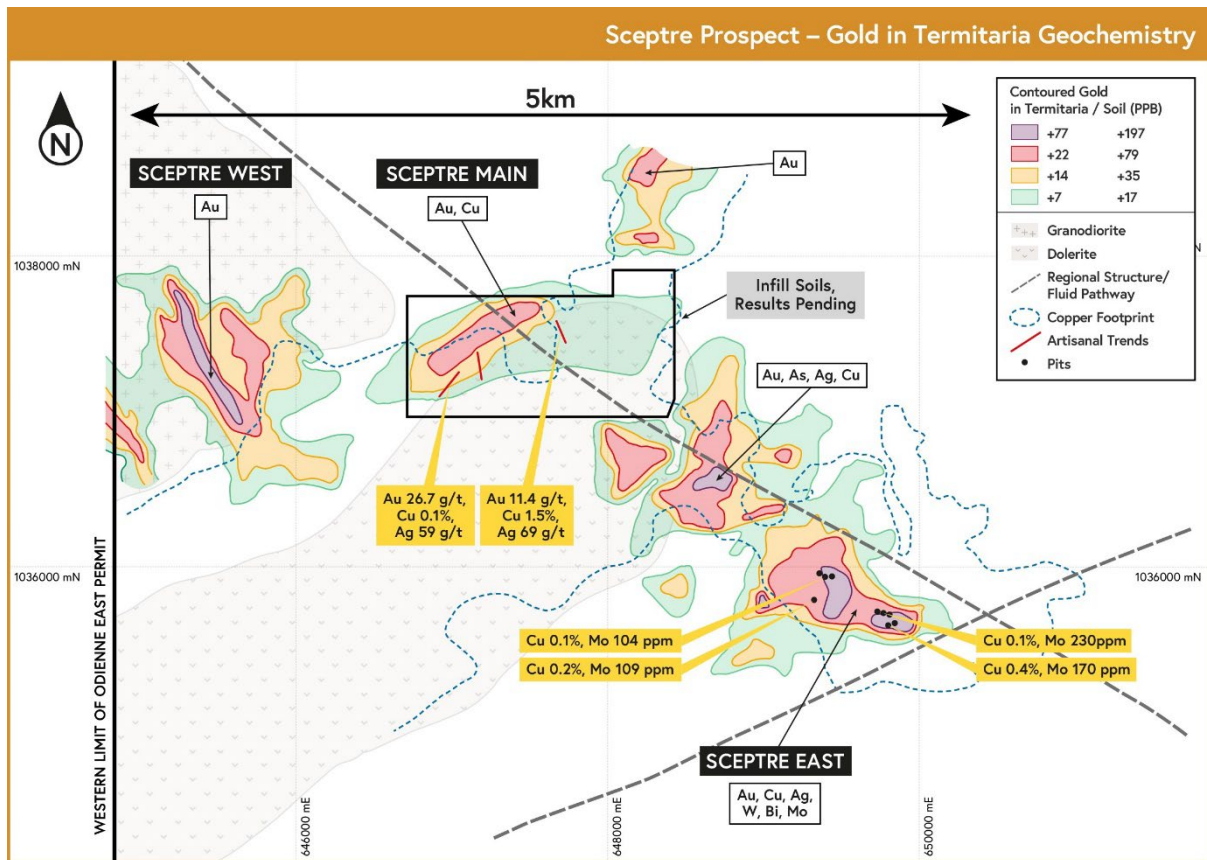
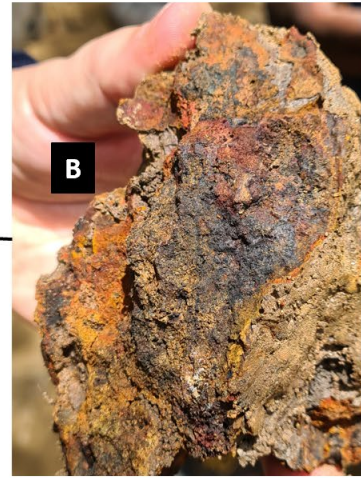
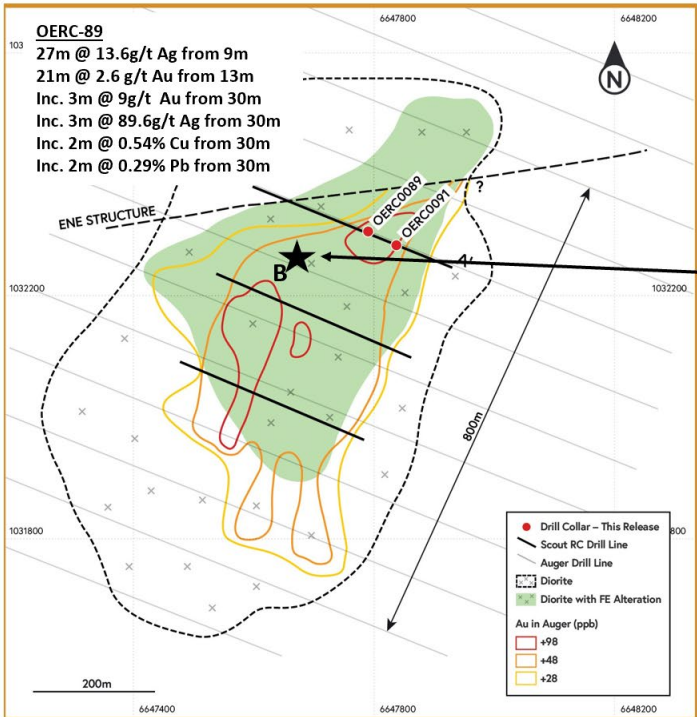


Figure 3: Sceptre Targets, gold geochemistry in soil and termitaria in-situ/residual sampling. Pitting at Sceptre East has confirmed the Cu-Mo anomalism. Cu, Ag, and Mo Analysis reported in this figure are from pXRF analysis, Au in rock chip are by fire assay.

Charger: Gossan discovery indicating a new orientation to mineralisation



(Above) WNW trending gossan is exposed approx. 100m southwest of the high grade intercepted in OERC0089. pXRF results;

- Ag 38 ppm (grams/tonne)
- Pb 1.64%
- Cu 1545ppm
- Bi 702 ppm

(Above gossan was crushed and sieved to -80 mesh prior to pXRF analysis, reported results are an average of 2 analyses)

Figure 4: Charger Target- Locality of gossan sample relative to drilling – point 'B', c. 100m southwest of drill hole OERC-89. All drill hole intercepts are reported as Fire Assay Gold and ICP/MS for other elements while the gossan sample is reported as pXRF results.